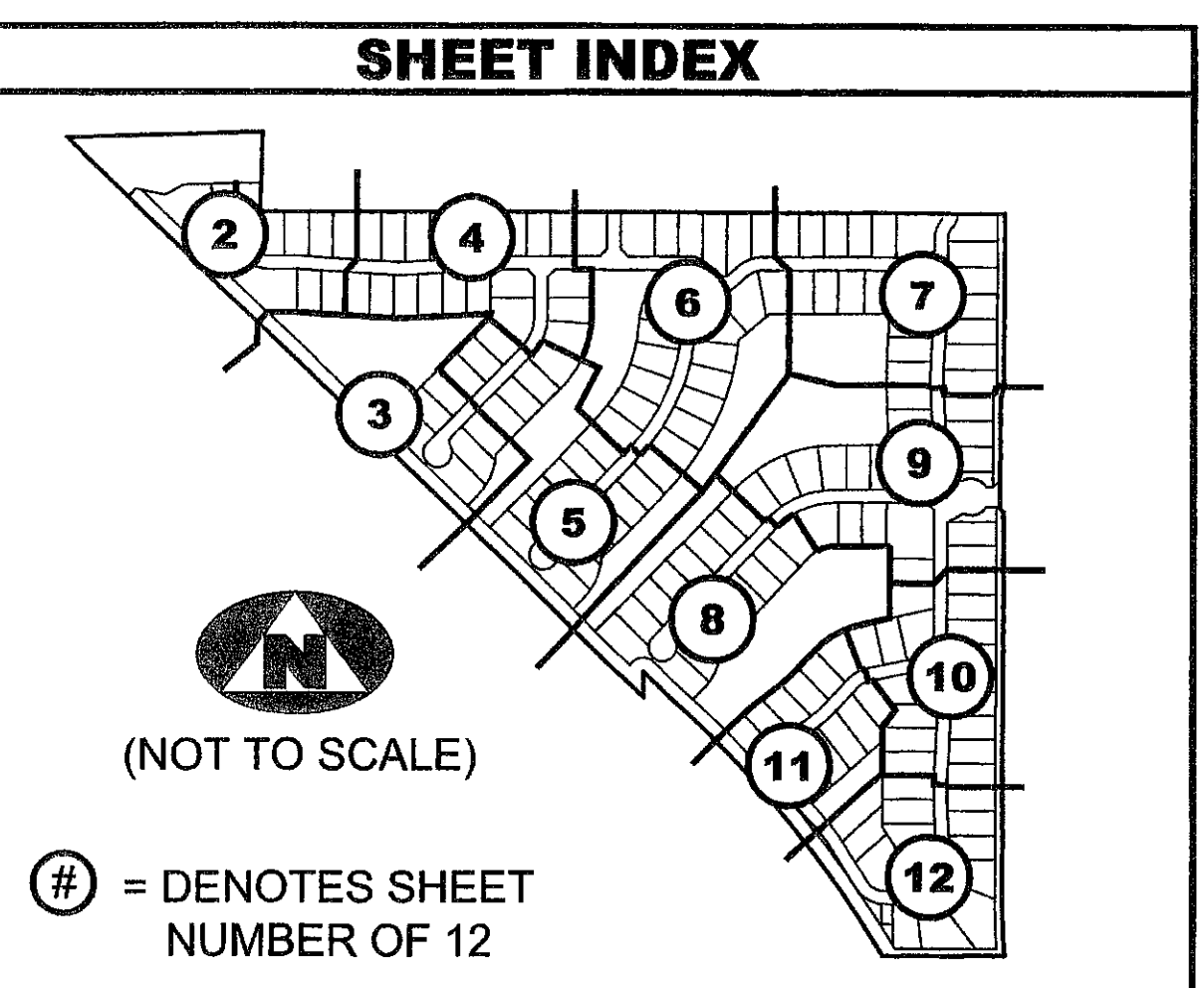
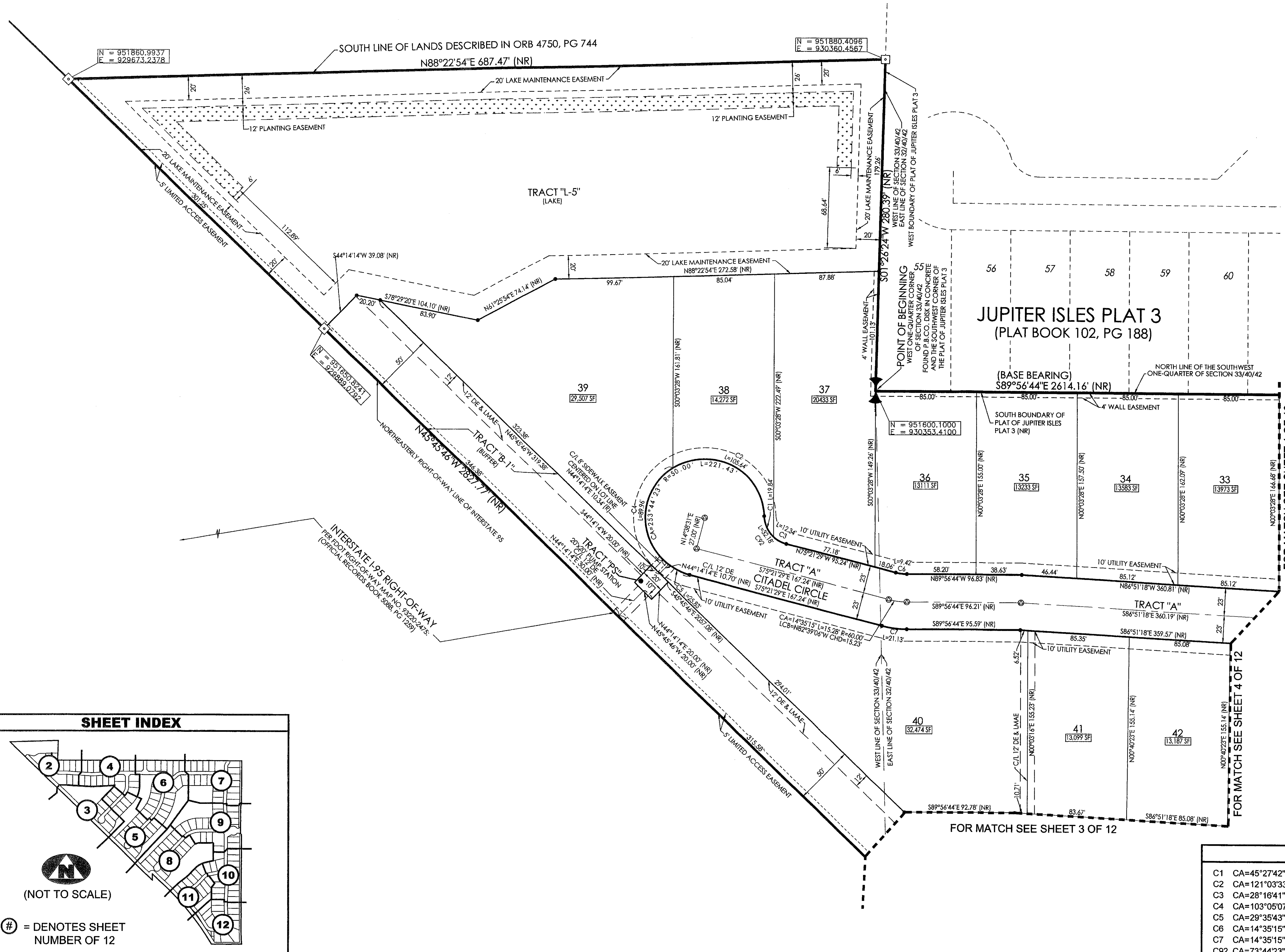
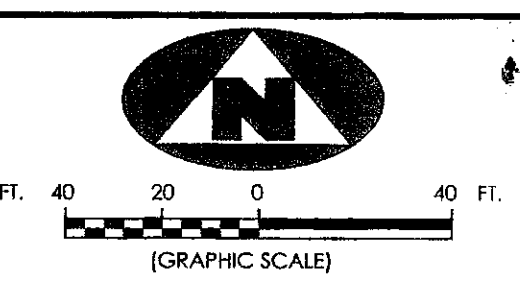


LOXAHATCHEE RESERVE

A PARCEL OF LAND LYING IN THE EAST ONE-HALF OF SECTION 32 AND IN THE SOUTHWEST ONE-QUARTER OF SECTION 33, TOWNSHIP 40 SOUTH, RANGE 42 EAST, TOWN OF JUPITER, PALM BEACH COUNTY, FLORIDA.

196



= DENOTES SHEET NUMBER OF 12

LEGEND table with symbols for radial lines, centerlines, easements, and monuments.

SURVEYOR'S NOTES: 1. THE BEARING BASE FOR THIS PLAT IS S 89°56'44"E AS SHOWN ALONG THE SOUTH BOUNDARIES... 2. IN THOSE INSTANCES WHERE UTILITY OR DRAINAGE STRUCTURES ARE CONSTRUCTED... 3. THIS INSTRUMENT WAS PREPARED BY WM. R. VAN CAMPEN, P.S.M. NO. 2424...

File information table: FILE: P256LOXPLAT, FB: , WO.NO.: P256LOX, SCALE: 1"=40', DATE: 2/27/2005, DWN: KVC, SHEET 2 OF 12

CURVE TABLE with columns for curve ID, CA, R, L, LCB, and CHD for curves C1 through C92.

ASSOCIATED LAND SURVEYORS, INC. 4152 W. BLUE HERON BOULEVARD-SUITE 121 RIVIERA BEACH FLORIDA 33404 PHONE: (561) 848-2102 FAX: (561) 844-9659 EMAIL: ALSSURVEY@AOL.COM